

AMISOL

design Daniel Rybakken



Type: Suspension

Light source: LED 53W^(*) 3000K CRI 90
dimmable push/DALI
220-240V~ 50/60Hz

D91S Ø75 cm 3.888 lm (opal version)
3.203 lm (gold/silver version)

D91S Ø110 cm 3.742 lm (opal version)
3.271 lm (gold/silver version)

Product use: Indoor

Materials: Aluminium body structure, plastic shader

Colors: Structure in white
disk in opaline white, silver and gold

Description: Like a solar sail, an incredibly powerful light source projects a beam of light onto the large, almost weightless disk, either diffusing or reflecting the light.

Rating: 220-240 V ~ 50/60 Hz
53W

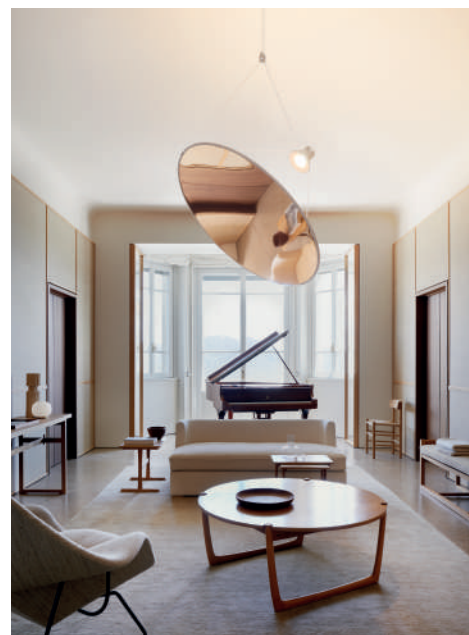
Insulation class and marks:

Reference code: **D91S structure**
1D910S000002 white cable: 3 m

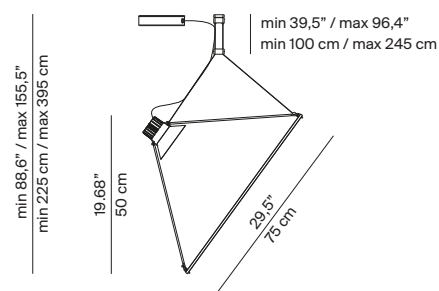
D91/1 disk 75 cm
1D910/100002 opal
1D910/100020 silver
1D910/100030 gold

D91/2 disk 110 cm
1D910/200002 opal
1D910/200020 silver
1D910/200030 gold

D91/OAAR anti-rotation accessory
1D91/OAAR000



D91S + D91/1
Ceiling rose: Ø 18 x 4 cm

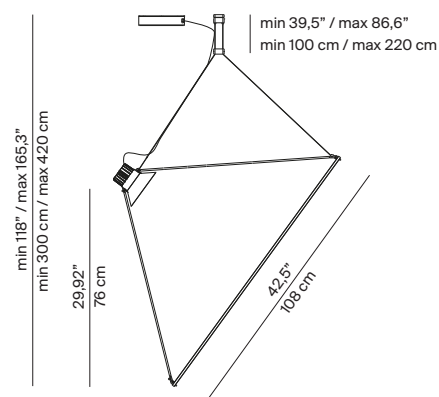


weight 2,5 Kg

(*) Power consumption by device



D91S + D91/2
Ceiling rose: Ø 18 x 4 cm



weight 3,0 Kg